

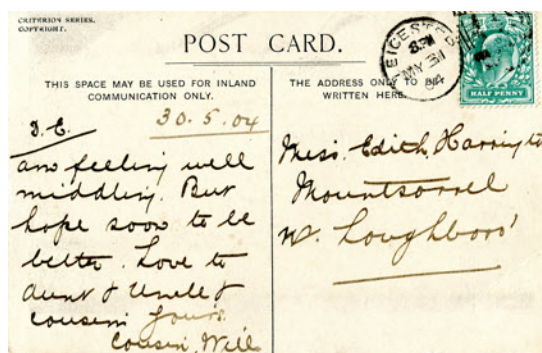
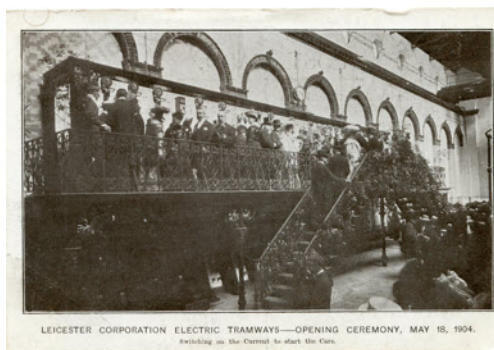
June Event Petanque

Tues 12th at 7.30. in the Blacksmith's Arms Quorn
Cold Supper provided Cost £5

From the Website

We received two communications this month:

- Christopher Lyon lives in Mountsorrel and is studying for an MA in History at the University of Birmingham. His chosen assignment for a module called "Sites and Sources in Modern British Studies" was about Mountsorrel and its status as a quarry village. He wrote "The Heritage Group website proved to be invaluable, particularly the census data for 1881 and 1891 as transcribed by Linda Tyman and Pat Neal along with some background information that informed my search for other sources and information".
- Linda Harvey wrote "I have inherited 24 postcards addressed to members of the Harrington family, mostly Elsie. They date from 1903 to 1906 Would you like to have these postcards to put in the archive?" She found them in an album that belonged to her mum. But she can find no connection with her family to the Harringtons or to Mountsorrel



Note in 1904 an address of 'Mountsorrel' was sufficient

Blast from the Past

William Harrington was born in Melton Mowbray in 1846.

In 1861 aged 15 he was living with his family in King Street Melton Mowbray. He was a pupil teacher and his father was a beer seller and grazier.

In June 1869 he married Mary Ann Allam, and they had 14 children. In 1871 he was a clerk at the quarry and living at 5 Roecliff Cottages in the North End of Mountsorrel. He had one son William.

In 1891 and 1901 they were living at No 44 Loughborough Road, but by 1911 had moved to Temperance Villa. William worked for 51 years as a clerk for The Mountsorrel Granite Company. He was also a director of the Quorn Gas Company, a member of the Parish Council and an active member of the Baptist church, where he was secretary for 45 years.

At his funeral the quarry closed for one hour as a sign of respect



William Harrington with his wife and eight of his children in the quarry

His son Charles Harrington married Ellen Preston in 1904 and hired the following from Elijah Cox, whose business was at 30 Market Place (Posting House)

8 November

Best carriage and pair of horses for wedding...12s,

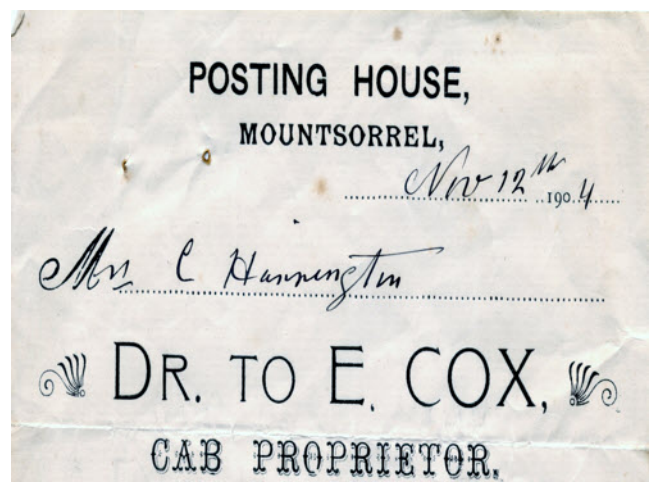
Carriage and pair to Sileby...2/6,

Pair to Rothley Station...5s,

To Sileby at night..2/6

12 November

Carriage from Rothley..3s



Mountsorrel in the Great War

Book Sales

Prepaid orders are still being received, over 100 to date for which a big “Thank You” to all who have taken up our offer so far. Whilst we are now into proof-reading with the printer we are still receiving and finding more information regarding Mountsorrel men who served in the Great War and only this week have added a further two to the over 400 already identified.



Sponsorship Campaign



Our Sponsored fundraising to support the book’s publication goes on with supporters visiting places as distant as Enderby (William Wingell’s memorial – he married an Enderby girl and is remembered at both Parishes)



And Gibraltar North Front Cemetery where Poppy Crosses were laid at Charles Baum’s grave from both the village RBL Branch and this Group.

So far nearly £300 of sponsorship money has been raised by just 3 people: just think what we could do if all our members took part. It just takes a visit to at least one memorial and one email to friends&family with the following link

<http://campaign.justgiving.com/charity/mountsorrelmuseumandheritagetrust/mountsorrelinthegreatwar>

Display in the Memorial Centre

This has been changed for June to continue the story of the Great war

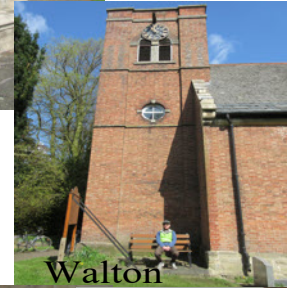
Sponsorship Campaign Tales

Tuesday 1st May

My photographer and I biked to five villages today but we only found one monument-at Barrow. We visited the churches at Walton, Hoby and Wymeswold to see if they contained memorials.



We were out of luck at Walton as the church was closed but it provided an an ideal spot for a rest in the sun.



But we were in luck at Hoby church where the porch was being painted for an expected visit of the Bishop, and the friendly decorator allowed us inside. And Wymeswold church was open



We drew a blank at Burton so I dispatched my photographer to make enquiries in the local shop. It was suggested we visit the nearby cemetery. There we found Commonwealth War Graves Commission headstones of WWII airman.



This is my photographer sneaking off to the tearoom for an unauthorised cuppa in Thrusington.

Searching for Shepshed

On May 8th we set off on a cycle track (we thought) to Shepshed. We were halted by men felling trees who directed us to another track and we ended up in Dishley. Abandoning the search for Shepshed we headed back to Loughborough and visited the Carrillon.

On May 22nd we set out again. No tree fellers this time but the track was strewn with their debris, nevertheless we carried on to the end of the track to be faced by a high locked metal gate. Like a couple of goats we climbed over the gate with our bikes only to find ourselves in Hathern with a puncture. I asked my colleague if I could borrow his pump. What pump? was the reply. So I had to make an emergency call home to be rescued.



Nature Notes

The Navins Wildflower Meadow is looking really lush with all the heat and the in particular the rain of the last few days. The Yellow Rattle is spreading which will degrade the grass growth in future years and give a better opportunity to the more colourful wildflowers. Currently the Ragged Robin, Red Campion and Buttercups are in full flower with Ox-Eye Daisies just starting to break. With the nectar rich flowers now coming on there is a noted increase in



The Peregrine project at Leicester Cathedral has paid off handsomely this year with two chicks being born for details and live webcam streaming see <http://leicesterperegrines.org.uk/streaming/>

Many of you will have noted the markedly slow return of some of our regular summer visiting birds, something that has been remarked upon elsewhere in the country but Swallows, Sand Martins and Swifts are back with us but not, so far, in the numbers we have enjoyed in the past.

Echoes from the Workhouse

The Rothley Heritage Trust's exhibition on the '*The Pauper Experience in the Barrow on Soar Poor law Union*' is open to the public in Rothley Parish Church on Sat 16 June from 1-5pm- with Cream Tea.

And on the following dates in the Rothley Cemetery Chapel

Sat 21 July, Sat 18 Aug, Sun 9 Sept and Sun 14 Oct .