



# MHG NEWSLETTER

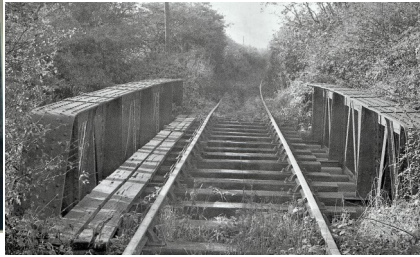
No 28

Continued from No 27-a bridge too far maybe

## Quarry Bridges



Deep cutting at Bond Lane



Girder bridge over the River Soar.-just along from the 'Roman Bridge'?



## Construction of Bond Lane Bridges



The café now

Sibley Bridge, not in Mountsorrel, but the café was an important bribe. The children were promised lemon & lime and a toasted teacake if they came for a walk along the river



Returning from photographing the cafe as it is now we came across this heron posing on the bridge over the weir

## Celebrating VE Day

On 8th of May we celebrated the 75th Anniversary of VE Day marking the end of the Second World War in Europe, in the Far East the War continued until 15th August which is marked as VJ Day. Whilst the current COVID-19 issues have prevented the planned celebrations at the Memorial Centre for VE Day, these have now been re-scheduled for 14th August to coincide with VJ Day. VE Day was marked in the village with a wreath fixed to the Market Place gate of the Peace Garden by the Mountsorrel Branch, Royal British Legion together with the Parish Council, in remembrance of the village's casualties during WW2. The wreath also acted as a mark of respect to all those NHS Staff and Carers who have lost their lives in the present pandemic.



To mark the 50th Anniversary of VE and VJ Days a small plaque was set up behind Sorrel Court.



75 years ago the village celebrated the coming of peace in Europe with street parties. We have been working at trying to identify as many folk as we can in these pictures and once we are able to access the Museum again we will continue that work so that they can be displayed at the Memorial Centre in August. If you recognise yourself or a member of your family do please let us know.



VE DAY Street Party – Loughborough Rd by the “Company Cottages”



VE DAY Street Party – Loughborough Rd



VE DAY Street Party – Church Hill Rd



Cross Lane

The Cross Lane photo is from Stephen Baum who has provided some details. He was six at the time and lived in Cross Lane. *The pic is taken outside no 41 after having a tea in the middle of the road, provided by John Baum (Dad's cousin) who lived at 46. He being a Market Gardener, together with Mr Dimmock and many others who had vegetable plots on their land. in Cross Lane, that was formerly known as Waughs Lane. I'm on the second row just above the arrow with my brother Malcolm to the left standing next to my Mum Ruth. Dad is on the far right of the back row. Auntie Dor, wearing glasses is to the far right end on the 4th row, in front of a man having a 'fag'. On the far right of the third row is Aunt Edie, the only one in a hat, but can only just be seen. She was Grandma's cousin and as far as I know this is the only pic of her in existence. She lived next door to Auntie Dor and my Grandma in Johns Avenue. Mr. Tyler, the founder of Tyler's shop in Loughborough is towards the middle on the back but one row holding his baby daughter behind Malcolm*

*Just beyond no 42 where we lived the road was just a narrow cart-track right up to The Ridings. Gypsy Lane was so called because there was often a Gypsy encampment there.*

# VE Day Images in Mountsorrel



2 Loughborough Road



1A Rothley Road



A Patriotic Pine Shop



The Swan



Round the Bend on The Green



The Butcher's Shop



Castle Hill

Find out more about Mountsorrel during WWII by visiting our website, [mountsorrelarchive.org](http://mountsorrelarchive.org), where there are articles about:

[The Village Home Guard](#)

[Civil Defence in the Village](#)

[Village Casualties](#)

[Village Industry](#)

# Lockdown/NHS Images in Mountsorrel



An optimistic sign in the Oriental Chef

Castle Hill rainbow, painted March 25 washed away by the rain on 29 March

Replaced by VE Day Commemoration May 8



Alms Houses Loughborough Road



Round the Bend on the Green



Watling Street Nursery



111 Leicester Rd



Market Place



Gnasher in Leicester Rd



Pilbeam

# Wildlife

## Navins Wildflower Meadow

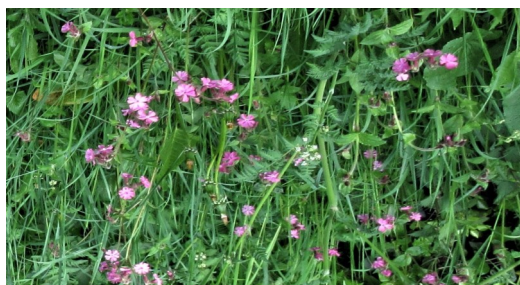
The wildflower meadow is still looking stunning with the best display of Cowslips that we've had and with all the good weather over the last few weeks other flowers, like the Lady's Smock are starting to build up for their displays – always worth a look for those of you able to get out for some exercise. That good weather that we've enjoyed has also really brought out the butterflies on and around the Meadow. In addition to the Brimstone we'd expect to see now there have also been; Peacock, Large White, Orange Tip, Wood White, Small Tortoiseshell, Painted Lady, Meadow Brown and Common Blue.



Cowslips en masse on the Meadow 25th March 2020



Lady's Smock on the Meadow 24th March 2020



Red Campion on the Meadow on 30 April 2020

## Birds

The main long distance spring arrivals have started to arrive with Swallows, Sand Martins and House Martins having been seen over the village and in the next few days the Swifts should be back. Chiffchaffs are heard daily along Cufflins Pit lane and they should be joined very shortly by the Blackcaps, Whitethroats and the various Warblers that nest around there in the summer.

### Rutland Water Ospreys

The Rutland Water Ospreys are not only back and paired up but looking at fledging youngsters – have a look at the live webcams at:

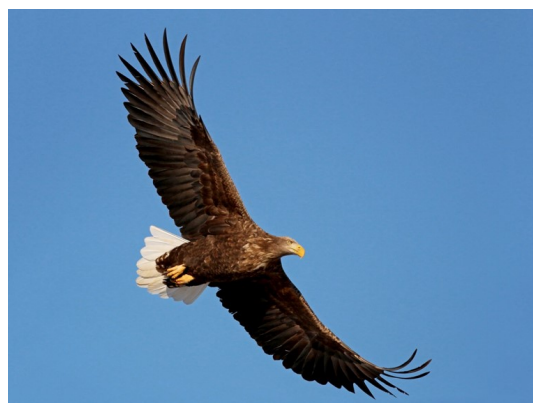
<https://www.lrwt.org.uk/wildlife/rutland-ospreys>

Something to watch out for!

White-tailed Sea Eagles - Four juvenile birds have been re-introduced to a site on the Isle of Wight, OK that's well out of our patch BUT... two of them have been wandering far away across the country (they are all satellite tagged) including over by Melton Mowbray. For more about their travels and the whole project see:

<http://www.roydennis.org/category/sea-eagle/isle-of-wight-sea-eagles/>

Even as juveniles these are seriously big birds with a wingspan of 6 to 8 feet (the Buzzards that we see regularly over the village have a wingspan of 3 to 4 foot) so do keep an eye out.



This last page is dedicated, in a small way, to Paul Hunt, a friend and MHG trustee who, sadly, recently passed away.

Paul was a genealogist who carried a lot of the background research for the MHG book, 'Mountsorrel in the Great War'

In his latest project he had been researching the lives of over 200 quarry workers who had moved to wherever they could find work, emigrating to America or moving to Scotland, Wales and other parts of England.

The article below, featuring just three of the 200 has been put together using Paul's research work.

**Henry Baum** was born in Mountsorrel in 1885 and lived on The Green. He was a set maker working in the quarry, as were his father, Amos and his three brothers.



In 1907 Henry decided to go to America and on the 2nd March he sailed to New York on the SS Carmania, the journey took nine days. His arrival contact was Sam Clarke, who was born in Mountsorrel and probably a family friend. Sam lived in Marlborough working in the Webb granite quarry. In 1909 Henry married Sam's daughter Mary Ann. They settled in New Hampshire and he worked in the Lovejoy granite quarry in Milford, just 30 miles from where his father in law worked. Many other Mountsorrel emigrants ended up in Milford.

**Leicester Chronicle 9 March 1889.**

Exodus of Mountsorrel Quarry men to America. — On Saturday last the second batch of quarrymen this season, consisting of about a dozen young men, left Liverpool in the ship Etruria for America, and in the course of a few days another batch of about the same number will be going.

**Leicester Chronicle 23 March 1889**

Another Exodus of Quarrymen. — On Friday morning another batch of quarrymen left this place, and expected to set sail on Saturday in the vessel " Etruria " from Liverpool to America.

**Charles Bowler** was born in 1867 in Mountsorrel and lived on The Green. He married Sarah Antill on March 17 1890. A few days later he sailed to America with his younger brother Arthur arriving in New York on April 5 1890. No record can be found of his wife sailing to America but his son Charles was born on April 13 1891 in Westerley Rhode Island.



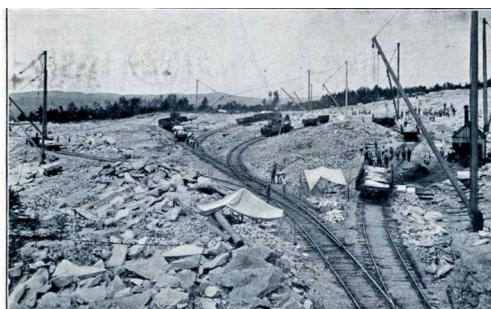
Charles & Sarah Bowler

In 1901 the family were back in Mountsorrel, living on The Green. Charles was working as a set maker. He must then have moved to Dalbeattie for on 23 march 1909 he sailed again for America from Glasgow. His family were left behind in Dalbeattie but followed on later and they all settled in Milford, Charles working as a paving cutter probably in the Lovejoy Granite quarry. In 1922 Charles and Sarah returned to Mountsorrel to visit his relatives on The Green.

His brothers Arthur and Joseph also settled in Milford.



Lovejoy Quarry Milford



Webb Quarry Marlborough

**Richard Marriott**, at the age of 14 was working in the Mountsorrel quarry. He sailed to America in 1884. He first worked in Westerley, Rhode Island quarrying the unique pink Westerley granite. He then moved to the St Louis quarries in Missouri and then to the Long Cove quarry, Rockland in Maine. Finally he moved to Oneco in Connecticut, worked there for 27 years and then bought one of the quarries. At the age of 80 he was still taking a turn now and then of operating the air compressor drills.

