



# MHG NEWSLETTER

No 25

Tuesday 11 February Talk 7.30. at  
the Mountsorrel Memorial Centre

Sue Templeman, who was due to talk to us about the Farnham family is unable to be with us due to a family bereavement.

Beryl McDowall has stepped into the breach at the last moment with:

## Many Years on the Waterways

A couple of Mountsorrel bricks have appeared on show in the museum so.....

### Mountsorrel Bricks

In the 1830's there were two brick makers in the village, Joseph Priestly and John Wooley. But they both also had other jobs. Joseph at different times was a maltser and a farmer and John a maltser, baker and shopkeeper. By 1861 Joseph appeared to have stopped making bricks and his occupation is recorded as a maltser. John carried on making bricks but by 1871 had moved to the brickyard on Rothley Plain (on the corner of Swithland Lane and The Ridings).

In the same year the Mountsorrel Brick Company was advertising the sale of bricks, pipes and tiles.

The following year it was put up for sale by Henry Wheelock, who moved to Bromsgrove and set up there as a brick and tile maker and coal merchant.

It was purchased by John Fairfax Scott and Francis Paget But the partnership was dissolved a few years later with Fairfax Scott settling the debts and taking control of the company. During the 1870's and 1880's Fairfax Scott remained owner of the company with a John Smith as manager.



W. Atkins Brickyard

The Brickfield, the Kilns, Engine, Boiler and Plant were put up to let in 1892.

It was taken over by William Atkins, who, prior to 1897 used carts pulled by a single horse to transport bricks from the

yard to Leicester. The weight of the load plus the cart was 2 tons.

In that year he purchased a steam traction engine to replace the cart and horse. The engine weighed 11 tons and the wagon 10 tons. The county council took him to court claiming compensation of £200 for damage to the road. Atkins argued that he had actually improved the road due to the fact that his engine and waggons had helped to roll in



Traction Engine of Wrights Brickyard in Sileby

The Mountsorrel brickyard was at the top of Linkfield Road and after the yard closed the clayhole flooded, the chimneys were demolished and factory units built on the site. These were Clarks Boxes, followed by Alvis and finally Rolls Royce. There are now houses on the site but the flooded clayhole is still there.



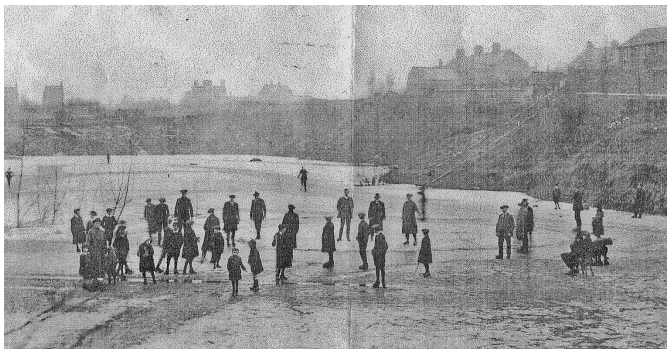
Brickyard chimneys at the top of Union Lane



Demolished chimneys somewhere in Mountsorrel



Rolls Royce site and flooded clayhole



Frozen clayhole

---

## Wildlife

### Navins Wildflower Meadow

At the end of January The bird nesting boxes around the Navins Wildflower Meadow were cleaned out ready for the spring. Two of the three small ones had been used probably by Blue Tits and the large one, we think, by a Jackdaw. These boxes have, like the wildflowers, been a successful return on the Group's efforts over the years. As the weather seems tentatively to be on the upturn the snowdrops have started to reappear. These are a recent addition to the meadow and are still only showing as single flowers but will over time bunch up to small clumps.

### Birdlife

Understandably quiet given the time of year but Tawny Owls are still to be heard during the night watches over Broad Hill. The local raptors are evident during the daytime with the now familiar sight of a Buzzard (or several at times!) over Broad Hill and across to the river valley along with regular sightings of Kestrel and young male Sparrowhawk which seems to like Rothley Road gardens. Winter visitors are somewhat limited as the building work along Halstead Rd is encroaching on what was their feeding grounds but a good flock of Redwings (100 – 150) is to be seen on the furthest field near to Wood Lane and in the trees on the western side of The Common

# VE Day

The 75th Anniversaries of VE and VJ days are being marked in the village on the Spring Bank Holiday (Friday 8th May) by a Tea Dance at the Memorial Centre. We will be supporting that event with two small exhibitions that we will mount in the Centre Reception area during May.

The first looks at our village WW2 casualties and the second will look at the various street parties that were held in the village in 1945 to mark both days. We have a few photos of the street parties but would really like to identify those shown in them, so can you help us (please)? We would also welcome more photos of those events and the memories of those

who attended them. Copies of the photos that we have will be on display in the village Museum along with the identifications that we have to date from 15th February. The Museum (above the Library), is open during Library opening hours on Thursdays, Fridays and Saturdays. Do come along and help us record these important village events.



## VE DAY

### 75th Celebration

Join us at The Mountsorrel Memorial Centre for an afternoon of food, music and dancing to celebrate the 75th anniversary of VE Day

Tea Dance with live music from **The Hip Cats**



A fabulous afternoon tea provided by **The MMC Cafe**



**Friday 8th May 2020 3-7pm**

This is a ticket only event. Tickets are free and can be obtained from [www.mountsorrelmemorialcentre.co.uk](http://www.mountsorrelmemorialcentre.co.uk), by calling 0116 230 4877 or by visiting the MMC Box Office.

THE ROYAL BRITISH LEGION

Collections on the day towards the Royal British Legion Poppy Appeal

**105 Leicester Road, Mountsorrel, Leicester LE12 7DB**

**FREE ENTRY**  
with pre booked ticket