



MHG NEWSLETTER

September 2018

October Meeting
Tuesday 9th October 7.30. Memorial Centre



In 1941 the premises of Clarke's Boxes situated at the top of Linkfield Road was requisitioned by the Government and taken over by a company from Coventry called Alvis. During WWII the Alvis manufactured parts for the Merlin engine which powered the Hurricane and Spitfire aircraft flown by the Royal Air Force during the Battle of Britain. A second factory (Alvis no.2) was built behind the one already in use, next to the pond, on land which was formerly a brick works. After the war Clarke's Boxes moved back into their original premises. The former Alvis no.2 was rented to the De Havilland Company for a short time, after which the site was rented to and later bought by Rolls Royce Ltd. who became a major employer in the village until the factory's closure in 1994.

Rolls Royce

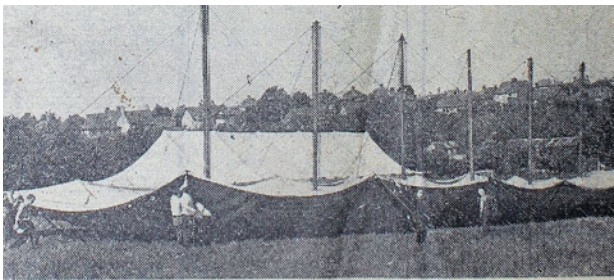


The site in Linkfield Road became a specialist production factory for 'structural and high temperature fabrications', advising on new designs of both aircraft and cars. In 1959 the factory was heavily damaged by fire. According to newspaper reports *'the flames spread faster than a man can run', damage is estimated at a million pounds', production of Rolls Royce's reverse thrust engine, on order from the USA, will be transferred to other factories'. much of Mountsorrel's work comes under the Official Secrets Act*

The factory was rebuilt over the next two years and in the 1970s the factory employed 1,200 people, but in 1993 Rolls Royce announced 5000 job losses and the closure of four plants, one of them being in Mountsorrel.

ROLLS-ROYCE JOBS ARE TO BE SAFEGUARDED

Rolls Royce Fire



Erecting a large marquee to be used as a tool shop



A COLUMN OF SMOKE rising hundreds of feet in factory at Mountsorrel was visible as far away as the left showing the interwoven hoses of the county blaze, were taken soon after the



Tool Room 1945

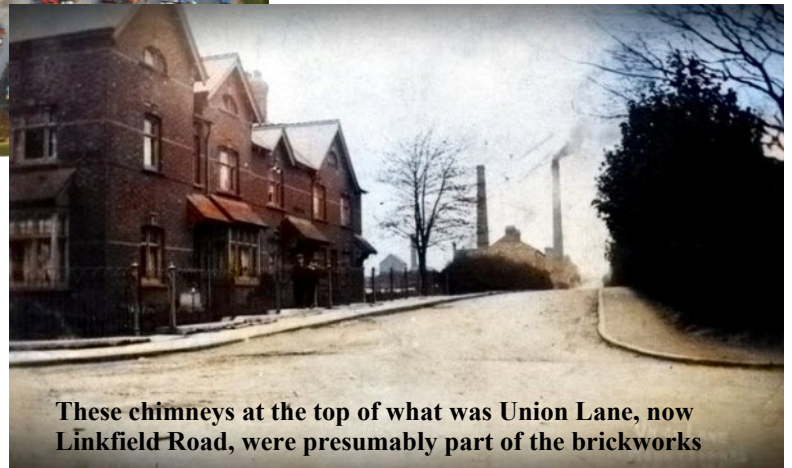


After the fire 1959

Mountsorrel Brick Company



In this image can be seen the workhouse, the Rolls Royce and Clarke's Boxes factories and the pond where clay was extracted for the brickworks



These chimneys at the top of what was Union Lane, now Linkfield Road, were presumably part of the brickworks

Our first record of the Mountsorrel Brick Company is when it was put up for sale in 1872

In 1874 it was advertising that its bricks, pipes and tiles could be delivered promptly by Canal or Railway.

In 1877 Joseph John Fairfax Scott dissolved his partnership with Francis Henry Paget and took control of the Mountsorrel Brick Company and its debts.

In 1878 Miss Fewkes was selling models in clay, by the Mountsorrel Brick Company, of Shakespeare, Byron, Scott, and Dickens, as well as a small model of Rothley Church. In the same year the manager of the brick company, John Smith, took out an action for alleged slander against the vicar of Mountsorrel, Mr Drake. In the end it was settled with an apology from the vicar.

In 1892 the Brickfield, with the Kilns, Engine, Boiler, and Plant complete, known as the Mountsorrel Brick and Tile Works, was advertised to be let on lease to a substantial tenant.

In 1900 Leicestershire County Council were claiming, from William Atkins, the owner of the Mountsorrel Brick Company, £200 for damage to the road between Leicester and [Mountsorrel]. Atkins had been transporting his bricks by horse and cart- a total load of 2 tons. But he changed to using a steam engine weighing 11 tons which pulled a truck which when loaded weighed 10 tons. The judge found in favour of the council but thought they had over- estimated the damage so the fine was reduced to £105

Mountsorrel in the Great War

The first print run of the book is now sold out, however, as we are still receiving orders we've had a further 50 printed. Copies will be available for sale at the Monthly Meetings but if you would like to order one or more as Christmas presents please speak to the Treasurer or contact John Doyle at johncdoyle@talktalk.net

Mountsorrel Poppy Appeal 2018 - 27th October

A talk entitled "The History and Work of the Poppy Appeal" to be given on the afternoon of 27th October at St Peter's church, Market Place, at 3:00pm. Entry to the talk is free of charge but donations to the Appeal will be appreciated and Poppies will be available as they will from locations across the village from the same day.

Mountsorrel Memorial Centre -27th October to 11th November,

In the Foyer of the Memorial Centre, Mountsorrel Heritage Group will mount a display looking at the Casualties of both Worlds Wars and the building of Castle Hill War Memorial. This will be the last in the series of WW1 displays that the Group have been mounting in the Memorial Centre since this Spring. Poppy Crosses will be available from the Reception at Mountsorrel Memorial Centre.

The Peace Garden -9th to 11th November,

A memorial arranged jointly by the Mountsorrel Branch, Royal British Legion and the Mountsorrel Heritage Group to the Men of Mountsorrel who fell in World Wars 1 and 2. The Peace Garden will be set out in the form of a small War Cemetery to allow villagers to pay their respects to the individual casualties of both World Wars.

Remembrance Sunday and Armistice Day-11th November

- 11:00** Field of Remembrance Service at the Peace Garden. Villagers will have the opportunity to lay tributes at the Peace Garden Memorial and at the individual memorials.
 - 12:30** St Peter's Church bells ring as part of the national commemorations
 - 14:20** The Chairman of the Parish Council will lay a wreath at the Memorial in foyer of the Mountsorrel Memorial Centre on behalf of all villagers.
 - 14:30** The village parade to remember and honour the fallen in all conflicts will depart the Green for the Village Remembrance Service at St Peter's church, Market Place, at 15:00. The Parade will return to the Green at 16:00. Please note that roads between the Green and Market Place will be closed to traffic whilst the Parade takes place (14:30 – 15:00 & 16:00 – 16:30).
 - 18:55** Mountsorrel Boys Brigade Bugler sounds Last Post from Castle Hill War Memorial. The War Memorial will as usual be floodlit throughout the Remembrance period.
 - 19:00** The Beacon on Castle Hill will be lit
 - 19:05** Bells of St Peter's & Christ Church ring in commemoration of the Armistice
- Any updates or changes will appear in the local press nearer the time and will also be posted on village notice boards.

The Peace Garden – Work Parties

There are two planned work party days for the Peace Garden, in preparation for Remembrance and also generally preparing the Garden for winter. The winter preparation work is planned for the week commencing 29th October. We will decide the day nearer the time depending upon the weather forecasts. Work to set out the Peace Garden for Remembrance is being arranged over three days to allow for weather interruptions and personnel availability:

6th November marking out, 7th November mount preparation, 8th November finalisation

Wildlife

Wildflower Meadow

Scything is now complete and the meadow is ready for winter. It will be interesting to see what effect this year's unusually long hot and dry spell will have had on next year's flowering.



*Scything in progress
3rd September 2018*



Birdlife

With change in the seasons birds have started to re-appear once more in our gardens after what has been a very sparse summer for bird sightings at home. What will be interesting to see is whether or not we still get our usual winter visitors on Broad Hill as the areas formerly used by the Redwings and Fieldfares are now being built upon.